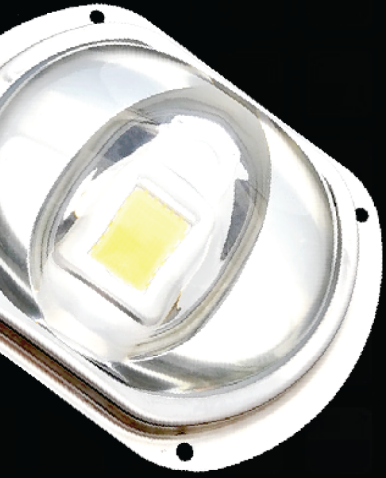


**LIMBUS**  
CONTROL YOUR LIGHT



# LED GLASS LENS Catalog

Design  
Solutions  
Manufacturing



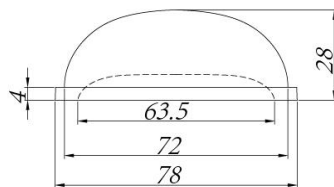
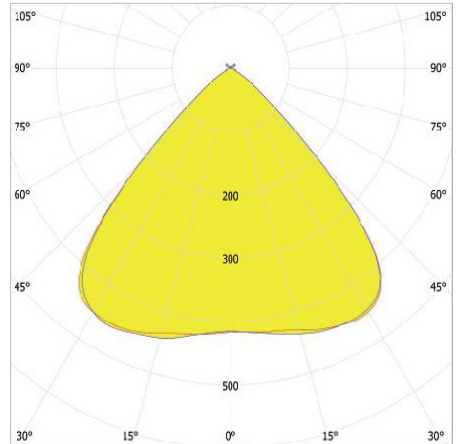
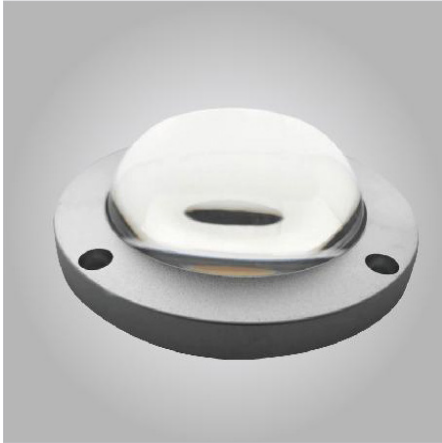
# LED High Bay Light Glass Lens

Model: TLS01NI-D78-90-ALU-GL



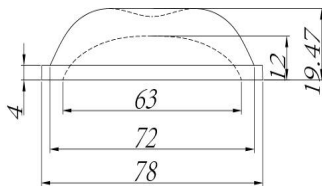
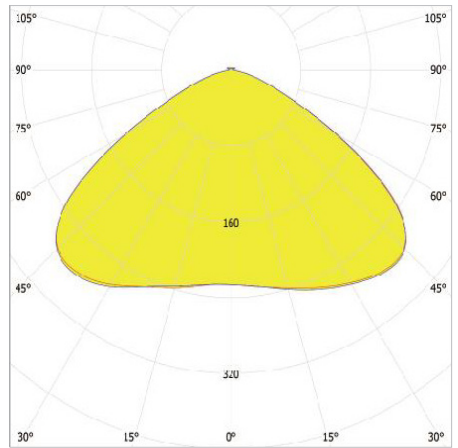
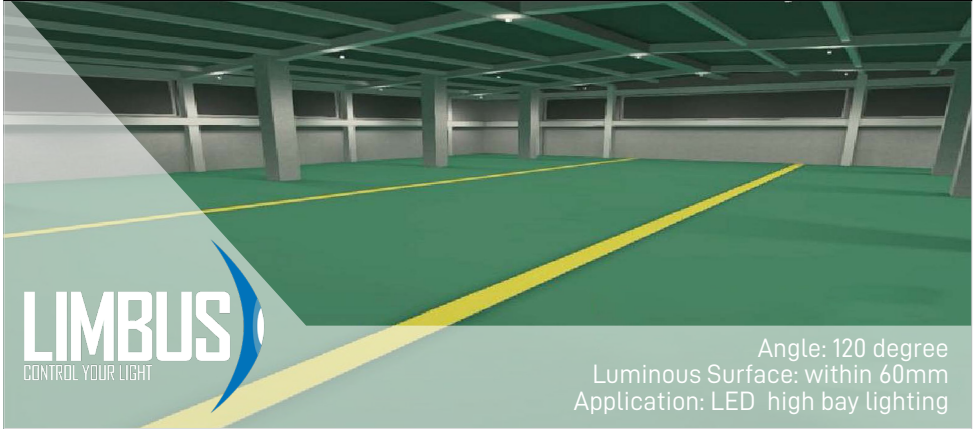
**LIMBUS**  
CONTROL YOUR LIGHT

Angle: 90 degree  
Luminous Surface: within 60mm  
Application: LED high bay lighting



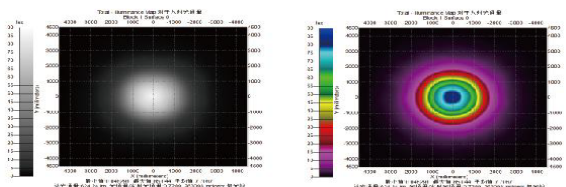
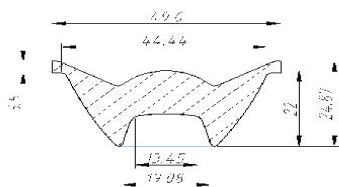
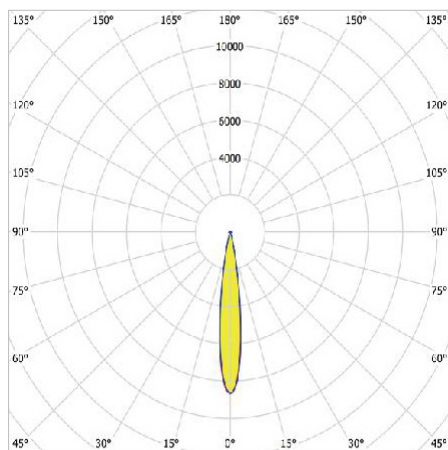
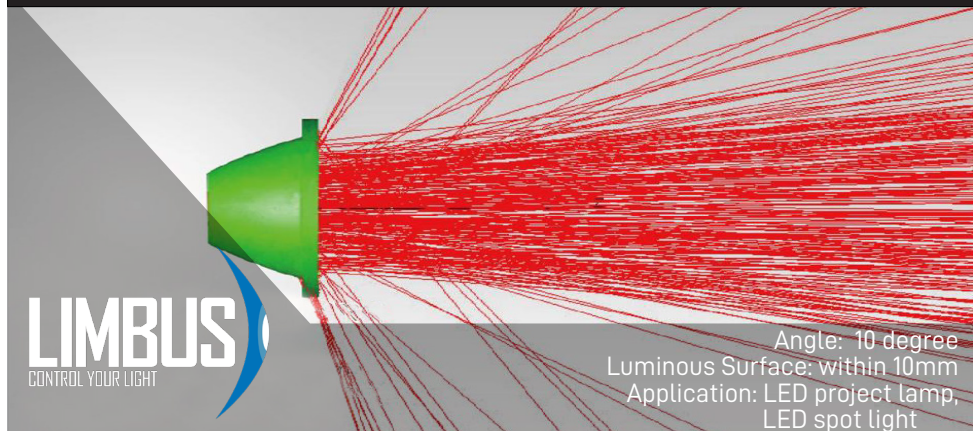
# LED High Bay Light Glass Lens

Model: TLS01NI-D78-120-ALU-GL



# TIR Glass Lens With Narrow Angle

Model: TLS01NI-D50-10-GL

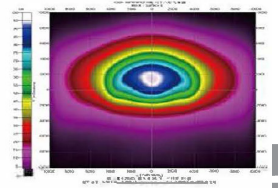
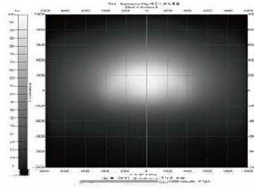
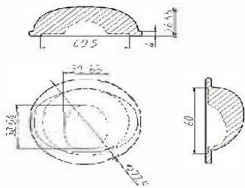
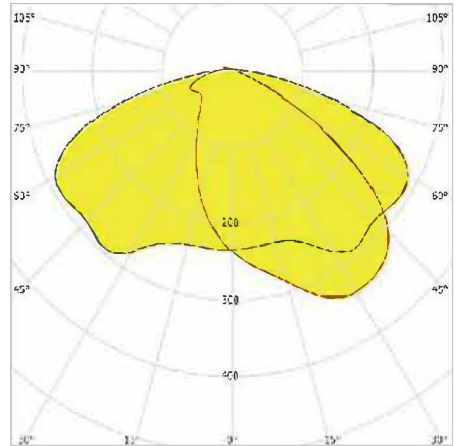


# Optical Glass Lens For Street Lighting

## Model: TLS01NI-D78-150x78-ALU-GL

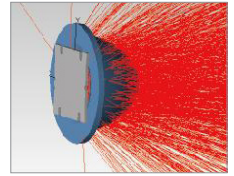
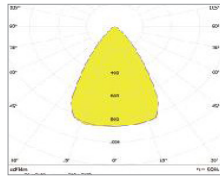
Angle: 150x75  
Type: Type III  
Led light-emitting area: within dia29mm  
Material: Borosilicate Glass 3.3  
Light transmittance: 94%,99%  
Working temp: -50~550°  
Application: LED street light

**LIMBUS**  
CONTROL YOUR LIGHT

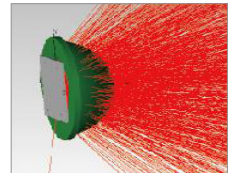
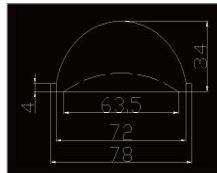
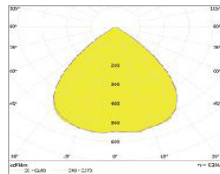
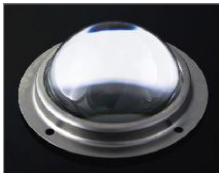
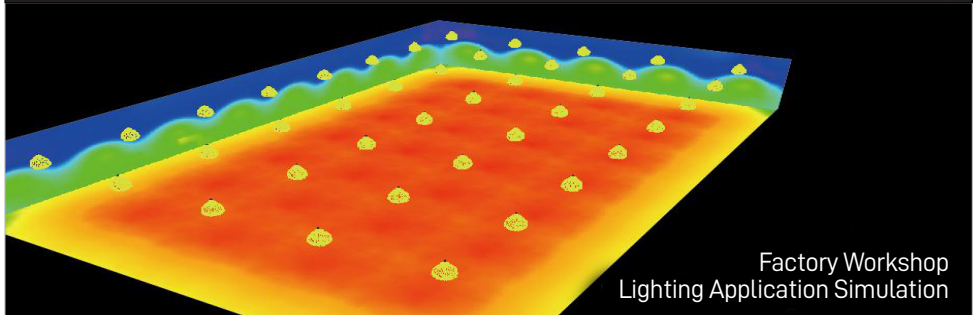


# LED High Bay Light Glass Lens

Model: TLS01NI-D78-60-SUS-GL

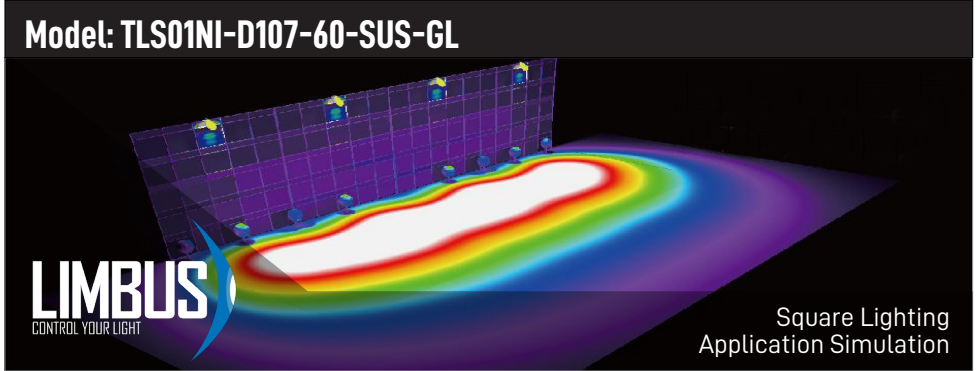


Model: TLS01NI-D78-90-SUS-GL

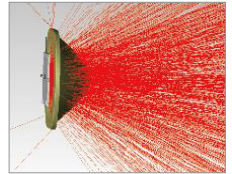
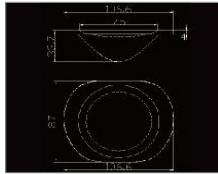
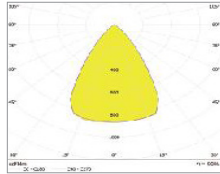


# LED High Bay Light Glass Lens

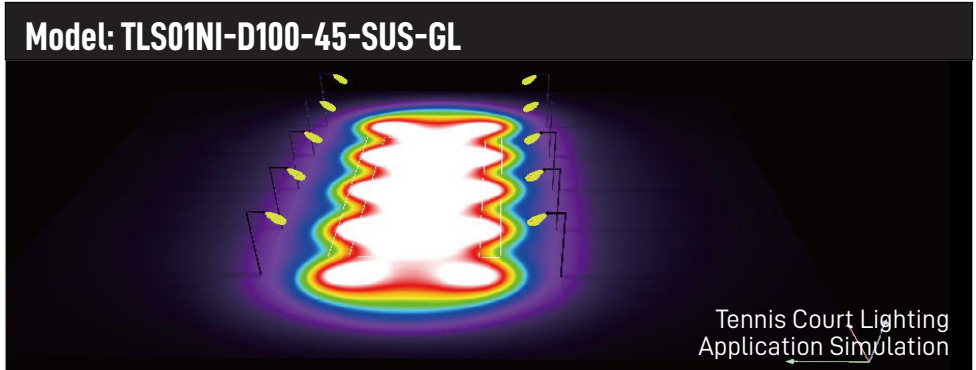
Model: TLS01NI-D107-60-SUS-GL



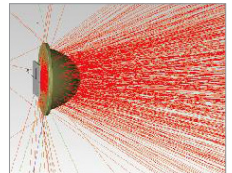
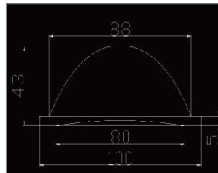
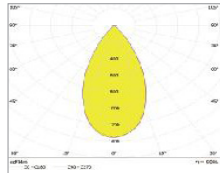
Square Lighting Application Simulation



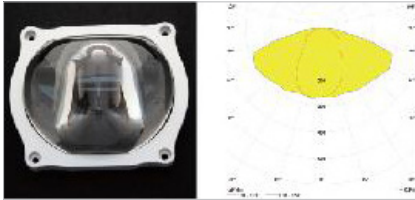
Model: TLS01NI-D100-45-SUS-GL



Tennis Court Lighting Application Simulation

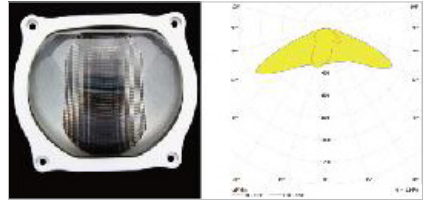


## 107MM Series Glass Lens



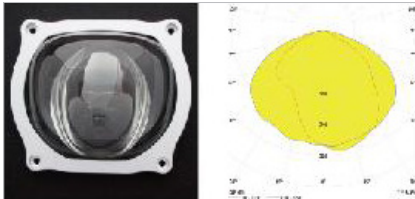
**TLS01NI-D107-150\*80-ALU-GL**

Size:107\*87mm  
Glass  
Typ.eff: 94%  
Degree: 150\*80T I



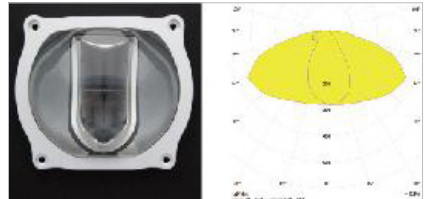
**TLS01NI-D107-160\*100-ALU-AG-GL**

Size:107\*87mm  
Glass  
Typ.eff: 88%  
Degree: 160\*100T II



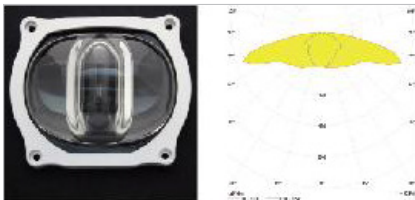
**TLS01NI-D107-140\*110-ALU-GL**

Size:107\*87mm  
Glass  
Typ.eff: 94%  
Degree: 140\*110T II



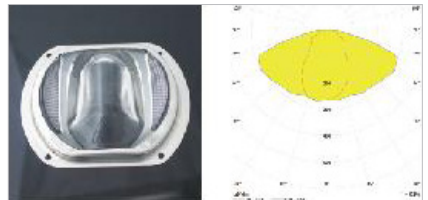
**TLS01NI-D107-150\*70\*ALU\*GL**

Size:107\*87mm  
Glass  
Typ.eff: 94%  
Degree: 150\*70T I



**TLS01NI-D107-160\*120-ALU-GL**

Size:107\*87mm  
Glass  
Typ.eff: 94%  
Degree: 160\*120T I

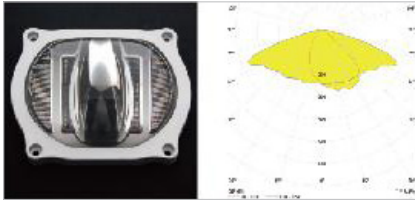


**TLS01NI-D107-135\*75-ALU-GL**

Size:107\*87mm  
Glass  
Typ.eff: 94%  
Degree: 135\*75T I

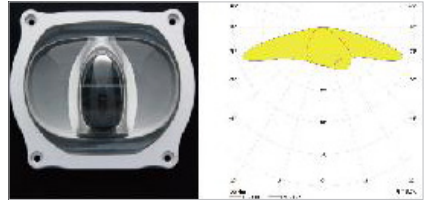


# 107MM Series Glass Lens



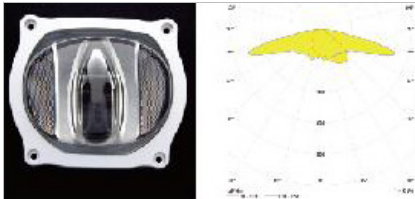
**TLS01NI-D107-150\*75-ALU-GL**

Size:107\*87mm  
Glass  
Typ.eff: 94%  
Degree: 150\*75T II



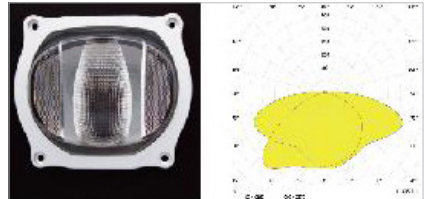
**TLS01NI-D107-160\*95-ALU-GL**

Size:107\*87mm  
Glass  
Typ.eff: 94%, 99%  
Degree: 160\*95T II



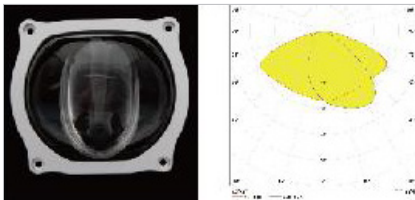
**TLS01NI-D107-160\*80-ALU-GL**

Size:107\*87mm  
Glass  
Typ.eff: 94%  
Degree: 160\*80T II



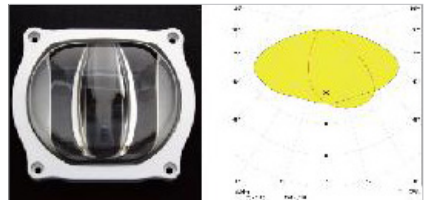
**TLS01NI-D107-150\*70-ALU-GL**

Size:107\*87mm  
Glass  
Typ.eff: 94%, 99%  
Degree: 150\*70T II



**TLS01NI-D107-150\*70-ALU-GL**

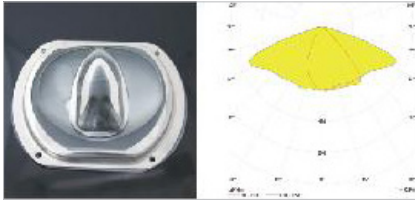
Size:107\*87mm  
Glass  
Typ.eff: 94%, 99%  
Degree: 150\*70T II



**TLS01NI-D107-160\*80-ALU-GL**

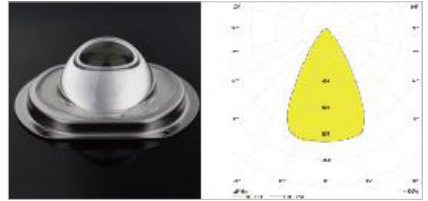
Size:107\*87mm  
Glass  
Typ.eff: 94%, 99%  
Degree: 160\*80T II

## 107MM Series Glass Lens



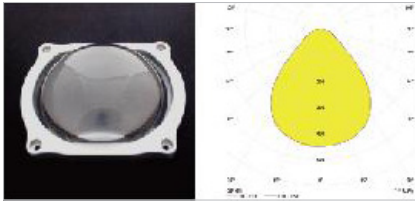
**TLS01NI-D107-150\*75-SUS-GL**

Size:107\*87mm  
Glass  
Typ.eff: 94%  
Degree: 150\*75T II



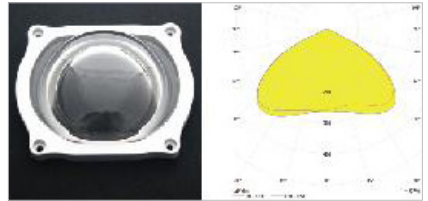
**TLS01NI-D107-60-SUS-GL**

Size:107\*87mm  
Glass  
Typ.eff: 88%  
Degree: around 60



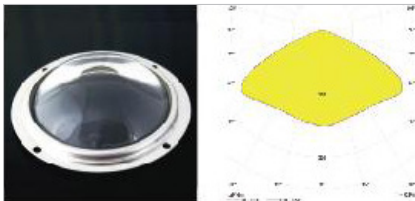
**TLS01NI-D107-90-ALU-GL**

Size:107\*87mm  
Glass  
Typ.eff: 94%  
Degree: around 90



**TLS01NI-D107-120-ALU-GL**

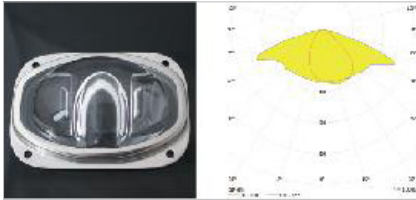
Size:107\*87mm  
Glass  
Typ.eff: 94%  
Degree: around 120



**TLS01NI-D109-130-SUS-GL**

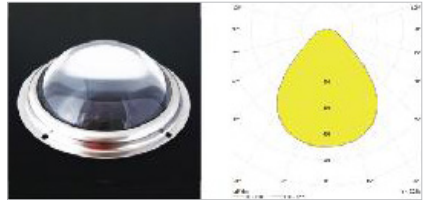
Dia 109mm  
Glass  
Typ.eff: 94%  
Degree: around 130

# 100MM Series Glass Lens



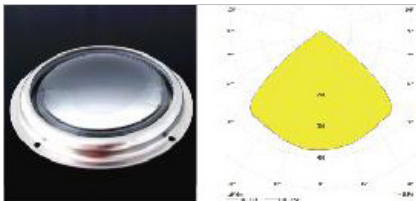
**TLS01NI-D102-145\*80-SUS-GL**

Dia 102\*63mm  
Glass  
Typ.eff: 94%  
Degree: 145\*80T II



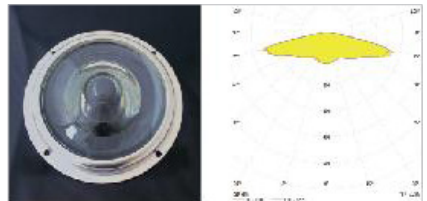
**TLS01NI-D100-90-SUS-GL**

Dia 100mm  
Glass  
Typ.eff: 94%  
Degree: around 90



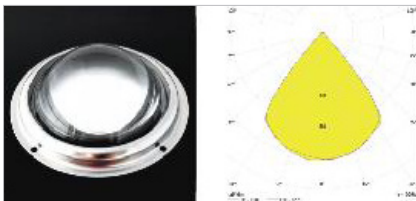
**TLS01NI-D100-100-SUS-GL**

Dia 100mm  
Glass  
Typ.eff: 94%  
Degree: around 100



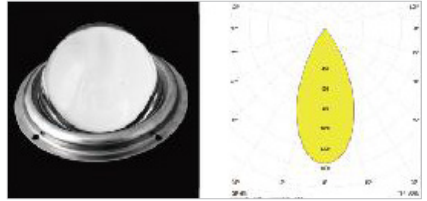
**TLS01NI-D100-150-SUS-GL**

Dia 100mm  
Glass  
Typ.eff: 94%  
Degree: around 150



**TLS01NI-D100-60-SUS-GL**

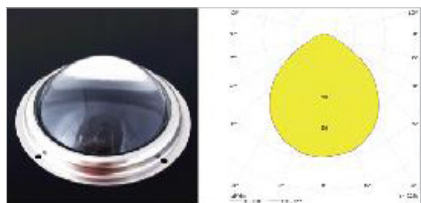
Dia 100mm  
Glass  
Typ.eff: 94%  
Degree: around 60



**TLS01NI-D100-45-SUS-GL**

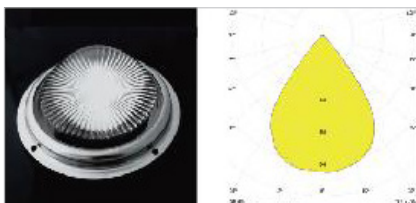
Dia 100mm  
Glass  
Typ.eff: 94%, 99%  
Degree: around 45

## 100MM Series Glass Lens



**TLS01NI-D100-120-SUS-GL**

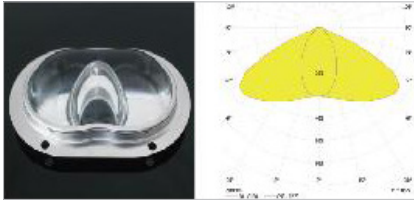
Dia 100mm  
Glass  
Typ.eff: 94%  
Degree: around 120



**TLS01NI-D100-75-SUS-AG-GL**

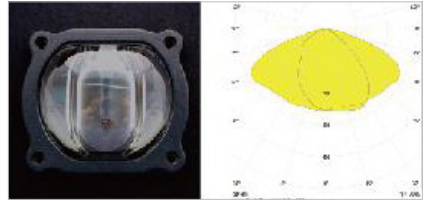
Dia 100mm  
Glass  
Typ.eff: 94%, 99%  
Degree: around 75

# 85-98MM Series Glass Lens



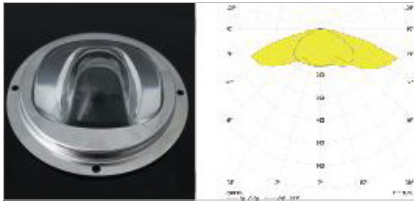
**TLS01NI-D86-130\*60-SUS-GL**

Size: 86\*52mm  
Glass  
Typ.eff: 94%  
Degree: 130\*60T I



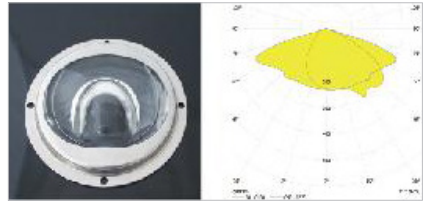
**TLS01NI-D85-150\*90-ALU-GL**

Size: 85\*70mm  
Glass  
Typ.eff: 94%  
Degree: 150\*90TIV



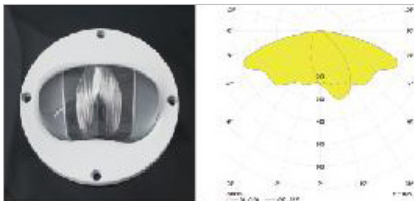
**TLS01NI-D92-150\*120-SUS-GL**

Dia 92mm  
Glass  
Typ.eff: 94%  
Degree: 150\*120TIV



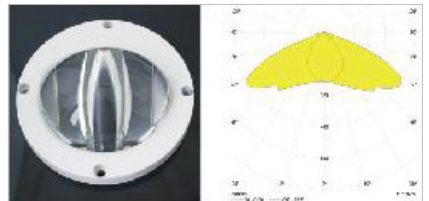
**TLS01NI-D92-150\*95-SUS-GL**

Dia 92mm  
Glass  
Typ.eff: 94%  
Degree: 150\*95T III



**TLS01NI-D92-160\*60-ALU-GL**

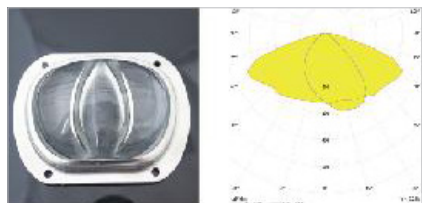
Dia 92mm  
Glass  
Typ.eff: 94%  
Degree: 160\*60 T I



**TLS01NI-D92-138\*80-ALU-GL**

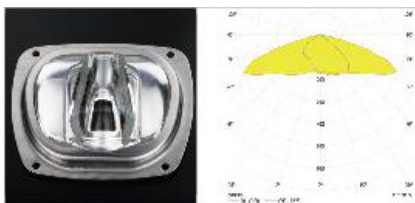
Dia 92mm  
Glass  
Typ.eff: 94%  
Degree: 138\*80 TIV

## 85-98MM Series Glass Lens



**TLS01NI-D95-150\*80-SUS-GL**

Size: 95\*71mm  
Glass  
Typ.eff: 94%  
Degree: 150\*80T II



**TLS01NI-D98-150\*90-SUS-GL**

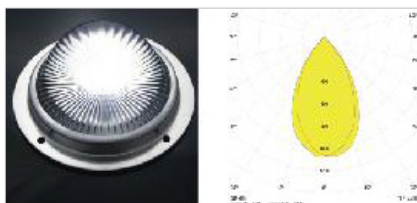
Size: 98\*80mm  
Glass  
Typ.eff: 94%  
Degree: 150\*90T III

## 78MM Series Glass Lens



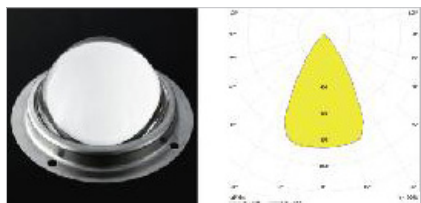
**TLS01NI-D78-45-SUS-GL**

Dia 78mm  
Glass  
Typ.eff: 94%  
Degree: around 45



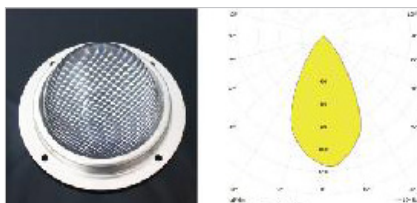
**TLS01NI-D78-45-SUS-AG-GL**

Dia 78mm  
Glass  
Typ.eff: 90%  
Degree: around 45



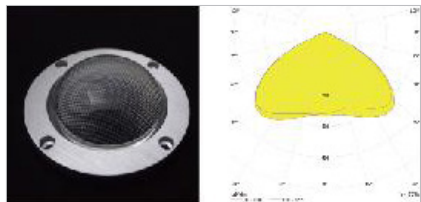
**TLS01NI-D78-60-SUS-GL**

Dia 78mm  
Glass  
Typ.eff: 94%  
Degree: around 60



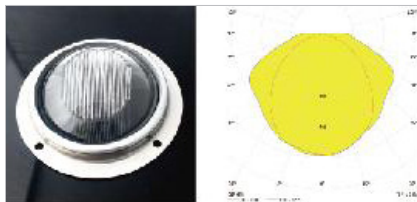
**TLS01NI-D78-60-SUS-AG-GL**

Dia 78mm  
Glass  
Typ.eff: 88%  
Degree: around 60



**TLS01NI-D78-120-ALU-AG-GL**

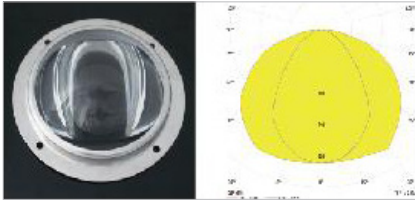
Dia 78mm  
Glass  
Typ.eff: 94%  
Degree: around 120



**TLS01NI-D78-140\*100-SUS-AG-GL**

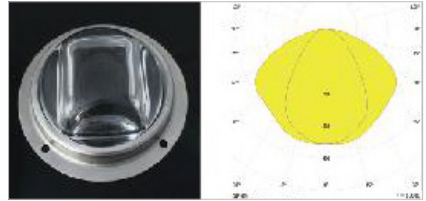
Dia 78mm  
Glass  
Typ.eff: 94%, 99%  
Degree: around 140\*100

# 78MM Series Glass Lens



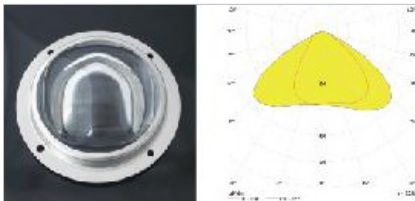
**TLS01NI-D78-130\*80-SUS-GL**

Dia 78mm  
Glass  
Typ.eff: 94%  
Degree: 130\*80T II



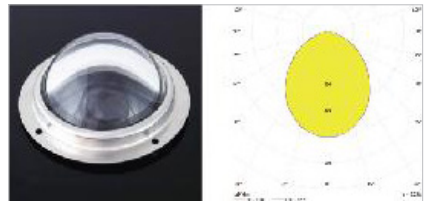
**TLS01NI-D78-140\*80-SUS-GL**

Dia 78mm  
Glass  
Typ.eff: 94%  
Degree: 140\*80T II



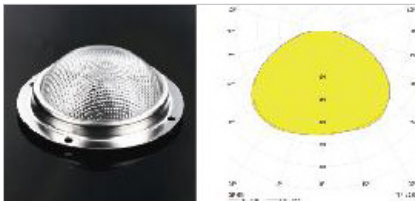
**TLS01NI-D78-120\*80-SUS-GL**

Dia 78mm  
Glass  
Typ.eff: 94%  
Degree: 120\*80T II



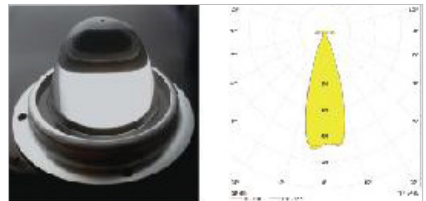
**TLS01NI-D78-100-SUS-GL**

Dia 78mm  
Glass  
Typ.eff: 94%  
Degree: around 100



**TLS01NI-D78-120-SUS-AG-GL**

Dia 78mm  
Glass  
Typ.eff: 88%  
Degree: around 120

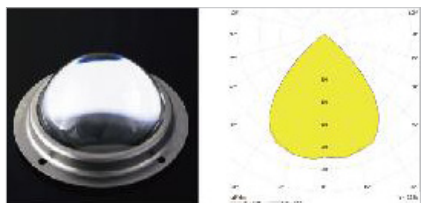


**TLS01NI-D78-45-SUS-GL**

Dia 78mm  
Glass  
Typ.eff: 94%  
Degree: around 45

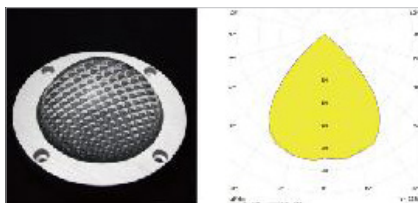


## 78MM Series Glass Lens



**TLS01NI-D78-90-SUS-GL**

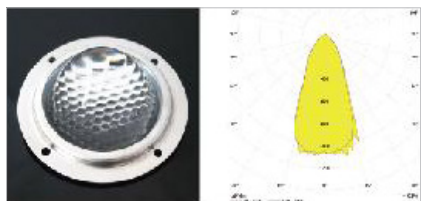
Dia 78mm  
Glass  
Typ.eff: 94%  
Degree: around 90



**TLS01NI-D78-90-ALU-AG-GL**

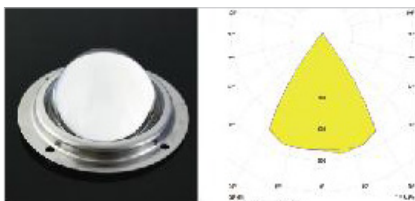
Dia 78mm  
Glass  
Typ.eff: 94%, 99%  
Degree: around 90

## 66MM Series Glass Lens



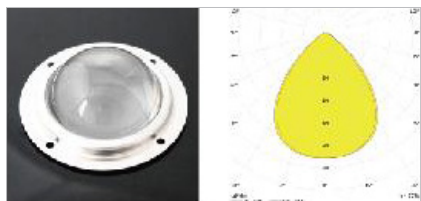
**TLS01NI-D66-45-SUS-AG-GL**

Dia 66mm  
Glass  
Typ.eff: 88%  
Degree: around 45



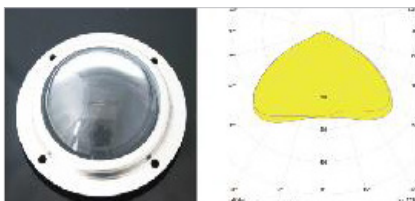
**TLS01NI-D66-60-SUS-GL**

Dia 66mm  
Glass  
Typ.eff: 94%  
Degree: around 60



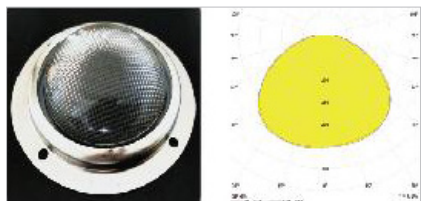
**TLS01NI-D66-90-SUS-GL**

Dia 66mm  
Glass  
Typ.eff: 94%  
Degree: around 90



**TLS01NI-D66-120-SUS--GL**

Dia 66mm  
Glass  
Typ.eff: 94%  
Degree: around 120



**TLS01NI-D66-120-SUS-AG-GL**

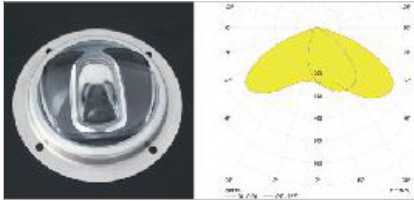
Dia 66mm  
Glass  
Typ.eff: 88%  
Degree: around 120



**TLS01NI-D66-60-SUS-GL**

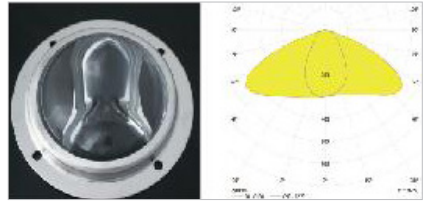
Dia 66mm  
Glass  
Typ.eff: 94%  
Degree: around 60

## 66MM Series Glass Lens



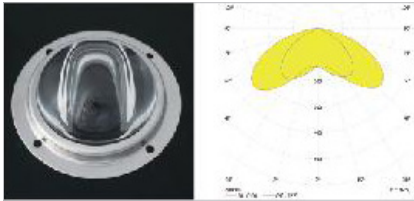
**TLS01NI-D65-140\*70-SUS-GL**

Dia 65mm  
Glass  
Typ.eff: 94%  
Degree: 140\*70T II



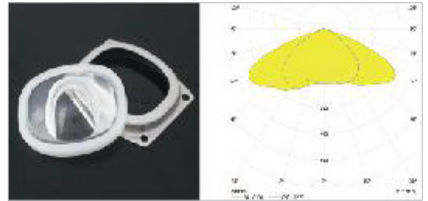
**TLS01NI-D66-140\*60-SUS-GL**

Dia 66mm  
Glass  
Typ.eff: 94%  
Degree: 140\*60T I



**TLS01NI-D66-140\*120-SUS-GL**

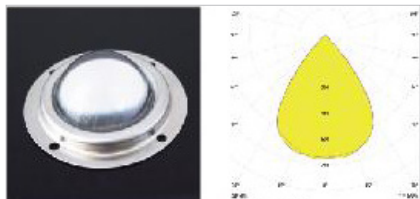
Dia 66mm  
Glass  
Typ.eff: 94%, 99%  
Degree: 140\*120T V



**TLS01NI-D66-140\*120-SUS-GL**

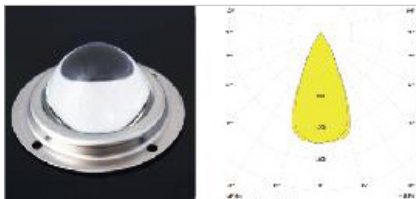
Dia 54\*45mm  
Glass  
Typ.eff: 94%  
Degree: 140\*120T III

## 50MM Series Glass Lens



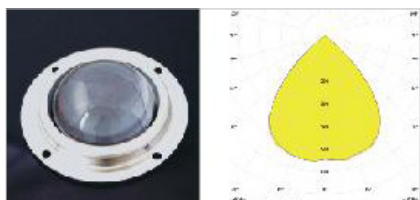
**TLS01NI-D50-70-SUS-GL**

Dia 50mm  
Glass  
Typ.eff: 94%  
Degree: around 70



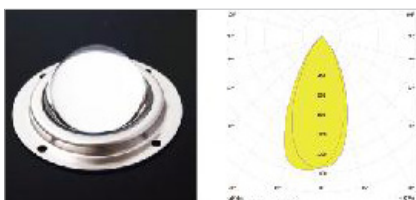
**TLS01NI-D50-40-SUS-GL**

Dia 50mm  
Glass  
Typ.eff: 94%  
Degree: around 40



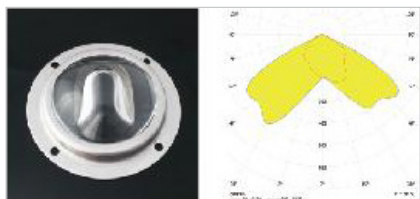
**TLS01NI-D50-90-SUS-GL**

Dia 50mm  
Glass  
Typ.eff: 94%  
Degree: around 90



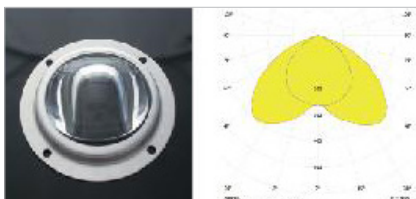
**TLS01NI-D50-60-SUS-GL**

Dia 50mm  
Glass  
Typ.eff: 94%  
Degree: around 60



**TLS01NI-D56-150\*80-SUS-GL**

Dia 56mm  
Glass  
Typ.eff: 94%  
Degree: 150\*80T II



**TLS01NI-D56-130\*100-SUS-GL**

Dia 56mm  
Glass  
Typ.eff: 94%  
Degree: 130\*100T I



TLS Teknoloji Sistemleri San. ve Dış Tic. AŞ.  
[www.tlsteknoloji.com](http://www.tlsteknoloji.com)